



# MEYER BLUE

Experiential Luxury by the Coast

OFFICIAL MARKETING AGENCY

## Huttons

SINGAPORE'S LARGEST  
PRIVATE REAL ESTATE AGENCY

# FACTSHEET

PROJECT DETAILS	
<b>Project Name</b>	<b>MEYER BLUE</b>
<b>Developer</b>	United Venture Development (Meyer) Pte. Ltd. (JV between UOL Group Limited & Singapore Land Group Limited)
<b>Location / Address</b>	83 Meyer Road, Singapore 437910 81 Meyer Road, Singapore 437908 (Management Office)
<b>Enbloc Details</b>	Purchase Price : \$392.18mil, Land Cost: \$1,668psf ppr
<b>District</b>	D15
<b>Project Description</b>	29-Jan-2024   Written Permission Proposed Residential Flat Development Comprising of 1 Block of 26-Storey Apartment (Total 226 units), 1 level of Basement Carpark, Swimming Pool, and Communal Facilities, on Lot 04029P MK 25 at Meyer Road (Marine Parade Planning Area), and Meyer Club Sky Terrace on 26th floor.
<b>Tenure of Land</b>	Estate in Fee Simple (Freehold)
<b>Expected Date of Notice of Vacant Possession</b>	31 December 2028
<b>Expected Date of Legal Completion</b>	31 December 2031
<b>Site Area</b>	8,981.1sqm / 96,672sqft
<b>No. of Towers &amp; Storeys</b>	1 Residential Tower, 26-Storeys
<b>No. of Units</b>	226
<b>No. of Carpark Lots</b>	226 Lots + 4 EV + 4 Handicap
<b>Project Architect</b>	P&T Consultants Pte. Ltd.
<b>Landscape Architect</b>	Henning Larsen Pte. Ltd. (previously known as Ramboll Studio Dreiseitl Singapore)
<b>Project Interior Designer</b>	Peter Tay Studio Index Design Pte. Ltd.
<b>Show Gallery Interior Designer</b>	Peter Tay Studio (4-Bedroom Premium + Study) Sujonohun (2-Bedroom Premium & 3-Bedroom Premium)
<b>Main Contractor</b>	Unison Construction Pte. Ltd.
<b>Quantity Surveyor</b>	ThreeSixty Cost Management Pte. Ltd.
<b>Project Account</b>	UNITED OVERSEAS BANK LIMITED FOR PROJECT ACCOUNT NO. 772-340-173-2 OF UNITED VENTURE DEVELOPMENT (MEYER) PTE. LTD
<b>Conveyance Solicitor</b>	Drew & Napier LLC

## Breakdown of Unit Types

Bedroom Type	Unit Type	No. of Units	Area (sqm)	Area (sqft)
<b>2BR Premium*</b>	BP1/ BP1(p)	50	62	667
<b>2BR Premium + Study</b>	BPS1/ BPS1(p)	25	66	710
<b>3BR</b>	C1/ C1(p)	25	92	990
<b>3BR Premium*</b>	CP1	24	106	1,141
<b>4BR Premium (with Private Lift)</b>	DP1/ DP1(p)	25	142	1,528
	DP2/ DP2(p)	25	141	1,518
<b>4BR Premium + Study (with Private Lift)*</b>	DPS1/ DPS1(p)	25	161	1,733
<b>5BR Suite (with Private Lift)</b>	E1/ E1(p)	25	177	1,905
<b>Penthouse</b>	PH1	1	278	2,992
	PH2	1	274	2,949

\*Showflat Unit Types

## Share Value / Estimated Maintenance Fee

Unit Type	Unit Type	Area (sqm)	Share Value	Estimated MF per month \$80/share
<b>2BR Premium</b>	BP1/ BP1(p)	62	6	\$480
<b>2BR Premium + Study</b>	BPS1/ BPS1(p)	66	6	\$480
<b>3BR</b>	C1/ C1(p)	92	6	\$480
<b>3BR Premium</b>	CP1	106	7	\$560
<b>4BR Premium (with Private Lift)</b>	DP1/ DP1(p)	142	7	\$560
	DP2/ DP2(p)	141	7	\$560
<b>4BR Premium + Study (with Private Lift)</b>	DPS1/ DPS1(p)	161	8	\$640
<b>5BR Suite (with Private Lift)</b>	E1/ E1(p)	177	8	\$640
<b>Penthouse</b>	PH1	278	9	\$720
	PH2	274	9	\$720

# Location Map



Connectivity		Notable Landmarks		Amenities		Recreation	
	KATONG PARK MRT		6 mins walk		SUNTEC CONVENTION & EXHIBITION CENTRE		SCHOOLS
	TANJONG KATONG MRT		8 mins walk		10 mins cycle		SHOPPING
			8 mins walk		5 mins drive		DINING
			5 mins drive		5 mins drive		HOTELS
			8 mins drive		8 mins drive		LIFESTYLE AND LEISURE
			8 mins drive		10 mins drive		SWIMMING CLUBS
			8 mins drive		10 mins drive		PADANG
			8 mins drive		15 mins drive		KALLANG WATER SPORTS CENTRE



**MEYER BLUE**
 Plot Ratio: 2.8 2.1 1.4
 Map Source: [streetdirectory.com](https://streetdirectory.com)

## Site Orientation



## Perspective – Meyer Blue – 5 Bedroom Balcony





# MEYER BLUE

Experiential Luxury by the Coast

## NEW FREEHOLD MASTERPIECE ON MEYER ROAD

Freehold

Coveted District 15

Tranquil city-fringe living on the east coast

Unblocked Sea and landed Views

**Walking distance to Katong Park MRT**

Excellent connectivity to the City

Close proximity to East Coast Park

Close to Renowned Schools

Distinctive Product

- ✓ **Distinctively Sought-After**
- ✓ **Distinctively Luxurious**
- ✓ **Distinctively UOL**

# Perspectives of Facilities



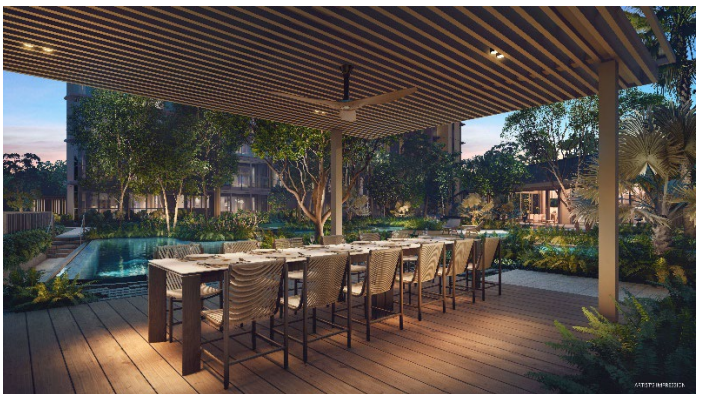
SKY LOUNGE



SKY GYM



ARCHIPELAGO POOL (night scene)



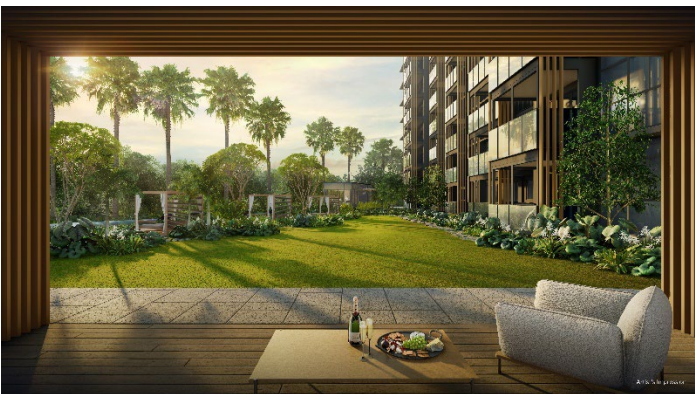
GOURMET PAVILION



ARCHIPELAGO POOL (view from Function Room)



SKY TERRACE



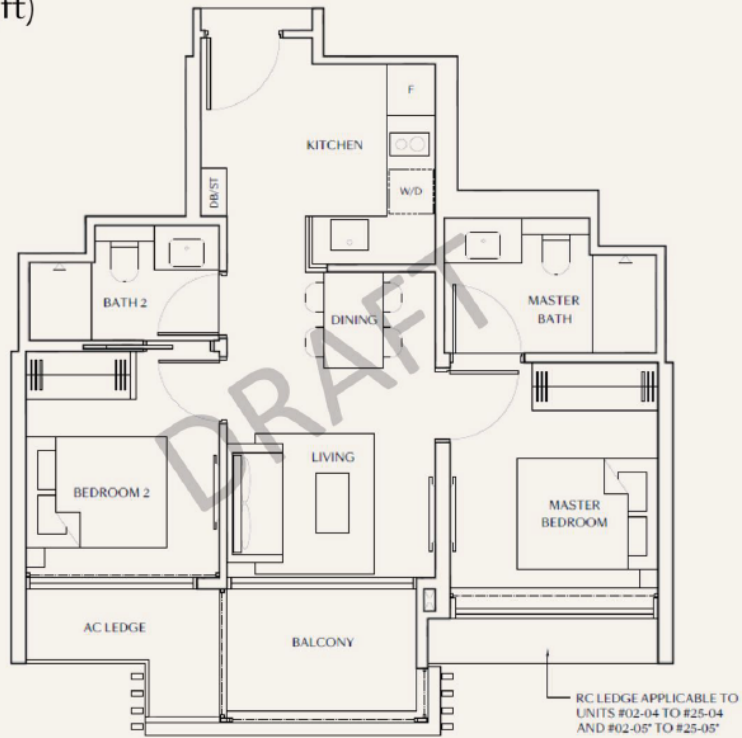
WELLNESS PAVILION



LAP POOL

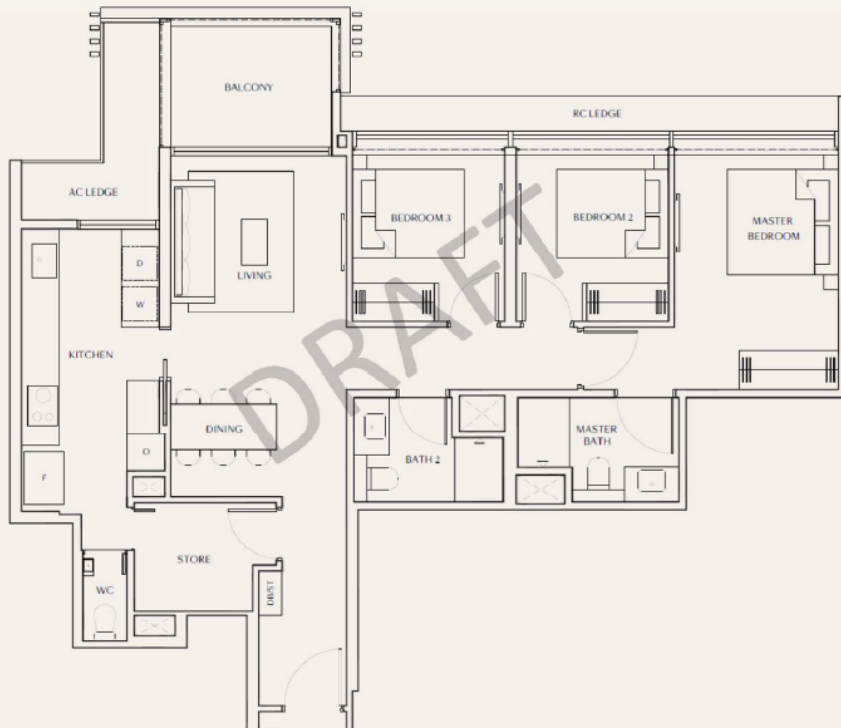
# Show Unit Floor Plans

2-Bedroom Premium (Show unit)  
BP1  
62 sqm (667 sqft)



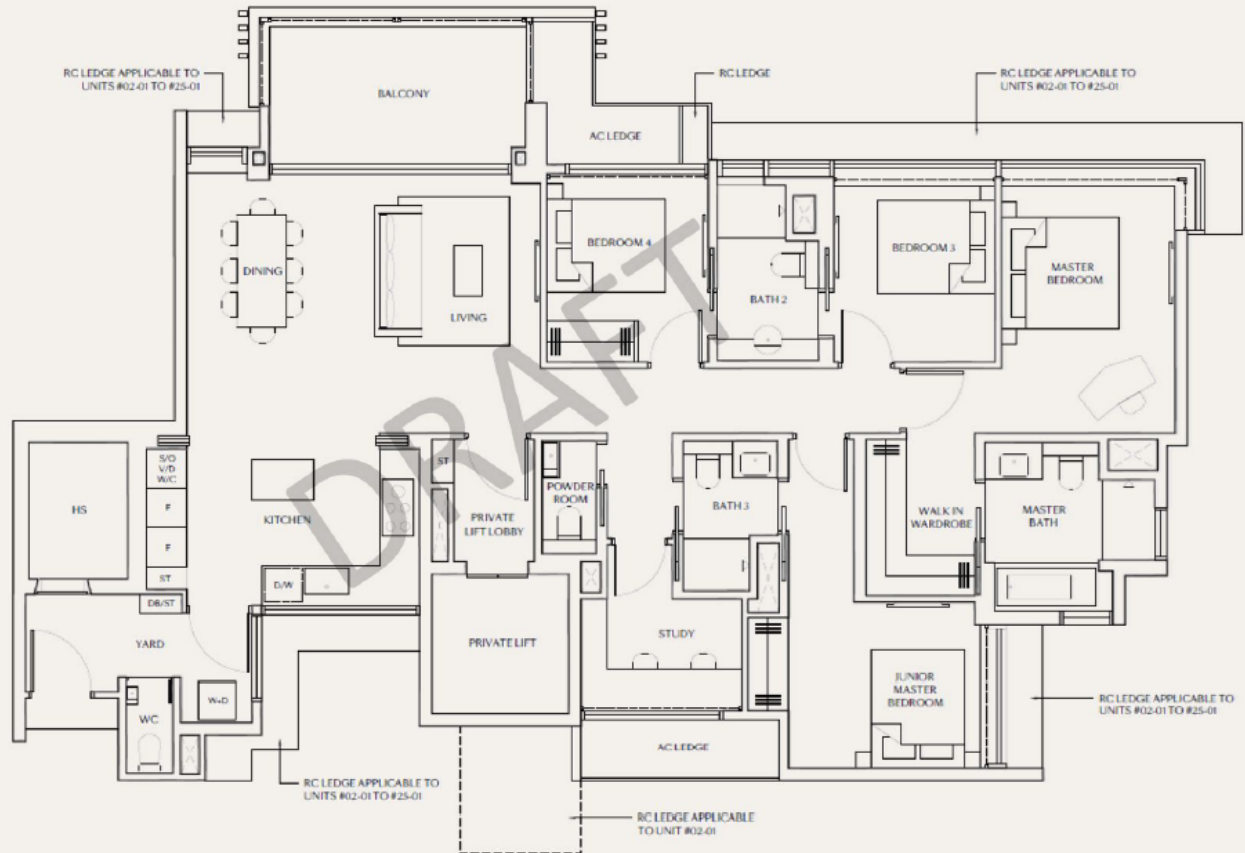
\* Plans are not to scale

3-Bedroom Premium (Show unit)  
CP1  
106 sqm (1,141 sqft)



\* Plans are not to scale

# 4-Bedroom Premium + Study (with Private Lift) (Show unit) DPS1 161 sqm (1,733 sqft)



\* Plans are not to scale

## Fittings and Finishings Brands

**GESSI**® **LAUFEN** **VZUG** **Poliform**